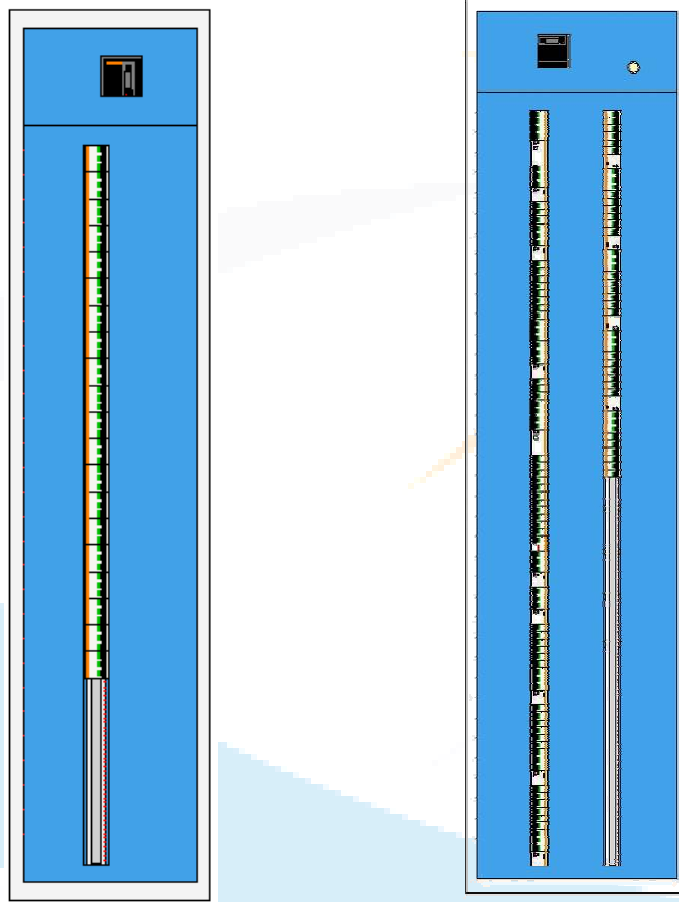




# Distribution Board Compact, up to 630A

geob - geostar



## Geostar : Introduction

Distribution Board series "GEO et GEOSTAR" are designed and dedicated to use all main brands of modular components.

They bring efficiency for upgrading within total safety conditions, by complying with requirements of operations and maintenance. The efficient internal arrangement gives a compact equipment, including cable way integrated by design, in the frame.

The design of this distribution board complies to the following requirements:

- Safety and reliability for operation
- Component accessibility
- Frame, components and dimensions standardisation
- Compact overall dimensions
- Efficient upgrade or modification
- Suitable for main worldwide components manufacturers

## Dimensions :

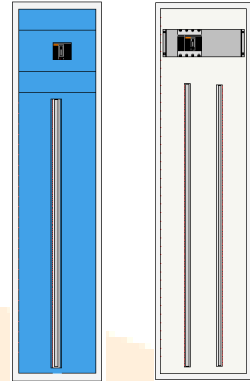
Standard dimensions of distribution board are:

### Geo :

- Height : 1800 mm  
2000 mm  
2200 mm
- Width : 400 mm
- Depth : 240 mm

### Geostar :

- Height : 1800 mm  
2000 mm  
2200 mm
- Width : 560 mm
- Depth : 240 mm



## Frame & cover :

Main frame and all covers done with 2 mm steel plate epoxy painted, assembled by rivet.  
Others internal elements in 1,5 mm Galvanize steel.  
Main frame colour RAL 7035. Front Face and covers RAL 5015 (customizable upon request )

## Technical Characteristics :

- Connexion : Direct on component
- Cable entry : Top & Bottom
- Protection Index : IP30 – IK07
- Service index : Up to IS223

## Standard compliance :

Compliant to IEC 60 439.1

## Equipment :

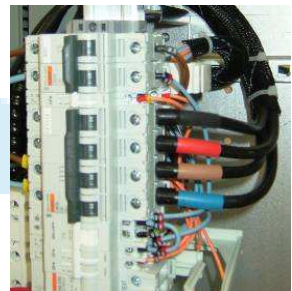
The number maximum of units (9 mm) per type:

### Geo :

- Height 1800 mm : 184 units
- Height 2000 mm : 206 units
- Height 2200 mm : 228 units

### Geostar :

- Height 1800 mm : 184 units x 2
- Height 2000 mm : 206 units x 2
- Height 2200 mm : 228 units x 2



## Options :

Additional base 150 mm  
Full door / glass door

